

Climate Change Overview

10/7/2024

**Kelly Murphy
Climate Change Officer**



Context

Welwyn Hatfield declared a Climate Emergency in 2019

Recently updated our Corporate Plan to reflect the high priority of Action on Climate Change



Internal Governance

Climate Officers Group (COG)

Officers meet every 2 months to discuss;

- What projects have been delivered
- What projects are in progress
- Any challenges/barriers to delivering projects
- Any projects we could add to the CAP

The CAP is updated as a result of these meetings and as part of the process to ensure we are on track to meet our net zero targets.

Climate Biodiversity Cabinet Panel

Meets every 2 months

Cross party membership

Members receive update report on climate action and specific projects being delivered

New actions are proposed for discussion and approval

Funding requests

Strategy and Climate Action Plan

New Transition to Net Zero Strategy provides a clear overall vision, demonstrating our ambitious pathway to be a net zero council by 2030 and borough by 2050.

The Climate Action Plan supports the strategy and outlines specific projects required to achieve our net zero targets.

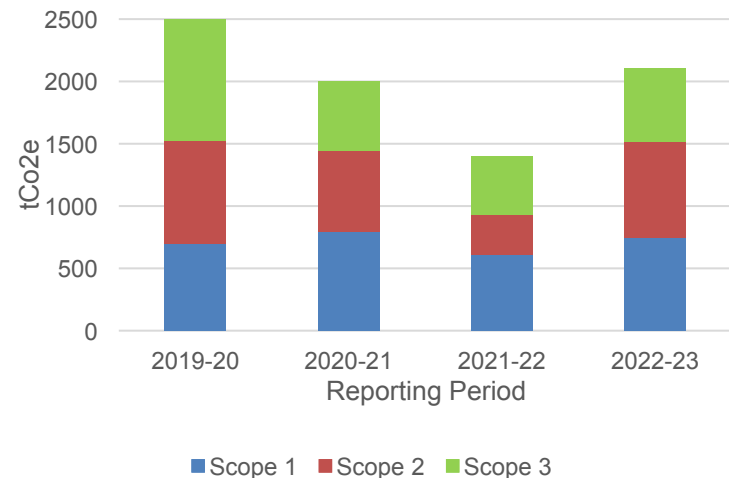
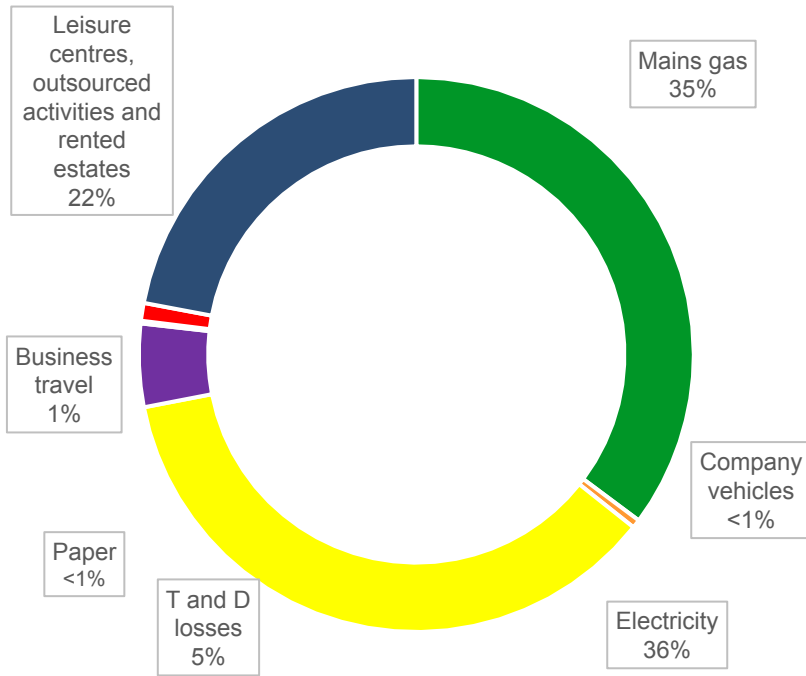


Ref	Category	Action	Job Title	Carbon reduction impact	Status	Comment
46	Transport	Apply for Government funding for new electric vehicle charge points in council-owned car parks as and when funding is available	Parking and P/Programs Services Manager	Medium	Complete	
47	Transport	Support the Living Lab project to trial electric and driverless vehicles in Hatfield business park	Assistant Director (Planning)	Low	Complete	
48	Transport	Review car parking charges as part of budget setting process with a view to generating a budget to invest in new green transport options	Parking and P/Programs Services Manager	Medium	In progress	
49	Transport	Work with Herts County Council to prepare Walking and Cycling Improvement Plan for Welwyn Garden City and Hatfield	Senior Projects Officer (Planning)	Medium	In progress	
50	Transport	Approve and publish Local Plan and local transport Plan policies that facilitate a significant uptake in cycling by improving safety, travel routes and storage facilities	Senior Projects Officer (Planning)	High	Complete	
52	Housing	Make it council policy to take a 'fabric first' approach to council house retrofit	Service Manager (Investment, P/Delivery)	Medium	Complete	
53	Housing	Bid to Government's Green Homes Grant to improve EPC rating of 32 council houses	Service Manager (Repairs & Maintenance)	High	In progress	This will complement other measures to reduce carbon emissions
54	Housing	Commission a study to investigate the magnitude of carbon emissions from council housing stock	Service Manager (Repairs & Maintenance)	High	In progress	

Emissions 2022/23 (Organisational)

Emission source	2022-23 tCO2e	%
Scope 1 - Direct emissions	751	36
Mains gas		35
Company vehicles		1
Scope 2 - Indirect emissions	763	36
Electricity		36
Scope 3 - other indirect emissions	590.0	28
T and D losses		5
Grey fleet		1
Paper		<1
Business travel (taxi, tube and train)		<1
Leisure centres, rented estate		22
Total		2104

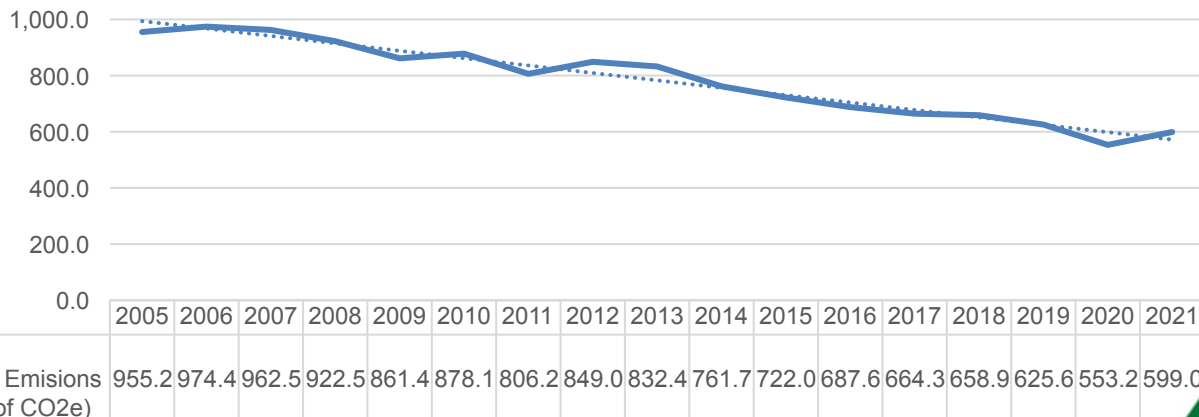
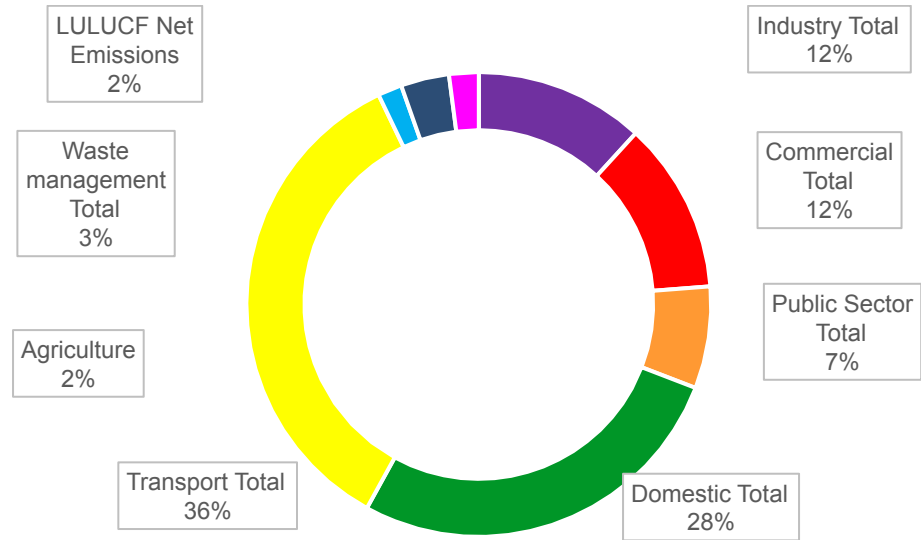
Scope	2019-20	2020-21	2021-22	2022-23	% change from baseline	% change from previous year
Scope 1	698	792	610	751	8	23
Scope 2	829	651	322	763	-8	137
Scope 3	980	557	473	590	-40	25
Total	2507	2000	1405	2104	-16	50
Emissions per household (tCO2e/house)	0.06	0.05	0.03	0.05	-22	49
Emissions per turnover (tCO2e/£m)	17.9	14.3	10.2	13.7	-23	34
Emissions per FTE (tCO2e/FTE)	7.3	5.8	4.0	5.9	n/a	45



Emissions 2021 (Boroughwide)

Most up to date data published by DESNZ/BEIS is 2021

2021		
Sector	ktCo2e	%
Industry Total	73.8	12.3
Commercial Total	74.7	12.5
Public Sector Total	44.3	7.4
Domestic Total	169.6	28.3
Transport Total	218.0	36.4
Agriculture	10.5	1.7
Waste management Total	21.0	3.5
LULUCF Net Emissions	-12.9	-2.2
Total Emissions	598.96	100.0



Energy – Commercial

- Awarded £3,000 through the Towards Net Zero Carbon funding scheme, to upgrade the lighting to LEDs in Mill Green Museum



- We were awarded £2.3 million in phase 1 of the Public sector decarbonisation scheme to install heat pump, PV, etc in Campus East, Campus West, and the Hatfield Swim Centre



Energy – Domestic

- In phase 2 of the Social Housing Decarbonisation Fund, we were awarded £2.8 million to retrofit some of our poorest performing social homes.
- We are in the midst of a programme to replace all communal lighting in social housing blocks of flats with LED's and motor detectors.
- Hertfordshire Solar Together (an opportunity for residents to buy solar panels for their privately owned homes at a cheaper price due to bulk buyer power) has been run the past two years with approximately 1,000 residents in Welwyn Hatfield signing up to the scheme over that period.



**WELWYN
HATFIELD**

Community Engagement

- We launched a Climate action survey to gain a better understanding of current levels of climate action in the borough and understand more about peoples' motivations. As a result of the responses, we have created the WHC Climate Hub; a one stop shop for everything climate related in the borough. It aims to signpost people to funding and volunteering opportunities, provide details of various local community eco groups, highlight good news stories, showcase progress meaning made around the borough.
- We have hosted a week of environmentally friendly events during the Great Big Green Week. This included two clothes swaps, a seed swap, a reusable nappy talk, a rags to rugs workshop, a mindful art class, a medicinal plant workshop and two Dr Bike repair and service pop up shop.



**WELWYN
HATFIELD**

Transport

- A part of the ORCS funding, we have installed over 196 off street Electric vehicle charge points around the borough, meaning Welwyn Hatfield has one of the highest rates of EV charge points per 100,000 people in the East of England (as of August 2023)
- We ran a staff travel survey in November 2023 and created a new up to date sustainable travel plan for Campus East and Campus West.



Natural Environment

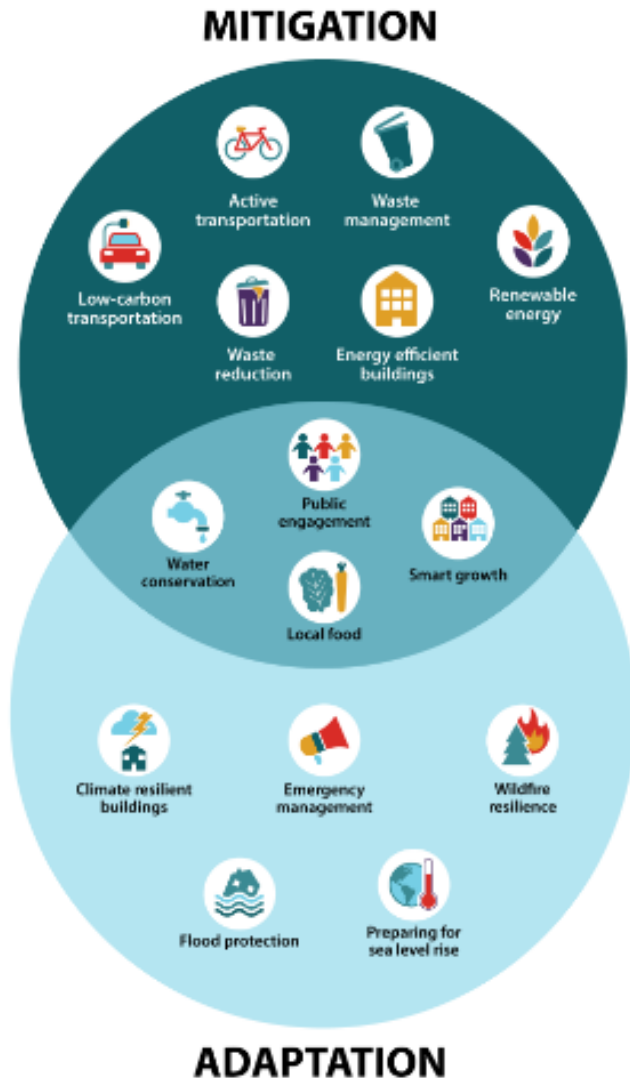
- Your Tree our Future initiative has been run over the last two years. In total we have given away over 20,000 trees to residents to plant on their privately owned land. The initiative is run by Hertfordshire County Council and is set to run for one more year.
- Danesbury Park and Singlers March Landscape Management Plans updated at the start of this year.
- Welwyn Hatfield has been awarded Tree City of the World recognition for a fifth consecutive year. The global scheme celebrates and promotes places that create green space in urban areas.
- In line with Government legislation the council has started to implement Biodiversity Net Gain on development sites. BNG is designed to ensure that biodiversity is improved by 10%, providing a larger or better-quality natural habitat post development.
- We ran a biodiversity photography competition to encourage residents to get out into nature and highlight the biodiversity in our borough.

Waste

- Welwyn Hatfield are part of Hertfordshire WasteAware; partnership of county, district and borough councils working together to reduce, reuse and recycle Hertfordshire's waste. Various campaigns are run throughout the year, focusing on areas such as fly tipping, food waste and promoting reusable products.
- The annual compost giveaway proved to be hugely popular once again. This year we gave away 10 tonnes.
 - Welwyn Hatfield has seen a 12.4% decline in total household waste (2015/16 to 2022/23)
 - Welwyn Hatfield has seen a 5.4% increase in recycling and composting rate (2014/15 to 2021/22)



Adaptation



Climate change risk assessment has been completed.

Risks have been added to operational risk register

A new climate adaptation risk has been added alongside the climate mitigation risk on the strategic risk register.

Hertfordshire Climate Change and Sustainability Partnership

HCCSP is a strategic group which acts as the lead partnership organisation for partners to collaborate and identify joint work programmes on environmental, climate change and wider sustainability issues

- County
- 10 districts/borough
- Local Enterprise Partnership (LEP)

- Adaptation
- Behaviour Change
- Biodiversity
- Carbon
- Transport
- Water

